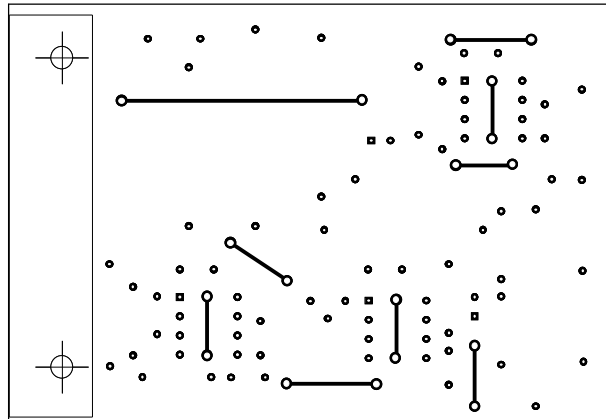
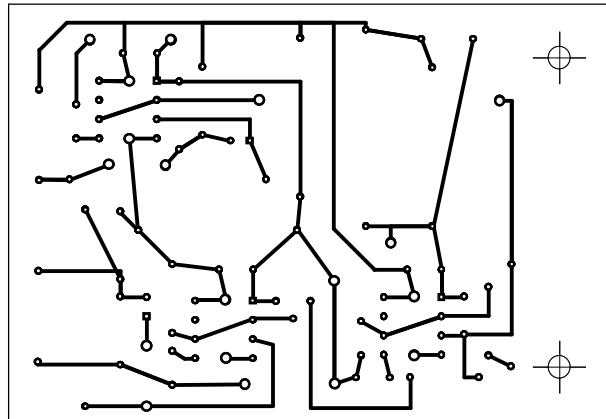


Black = Top layer / Component side - Negru = Fata de sus / Partea cu piese

Grey = Bottom layer / Solder side - Gri = Fata de jos / Partea cu lipituri



Top layer / Component side - Fata de sus / Partea cu piese



Bottom layer / Solder side - Fata de jos / Partea cu lipituri  
mirrored view - vedere in oglinda