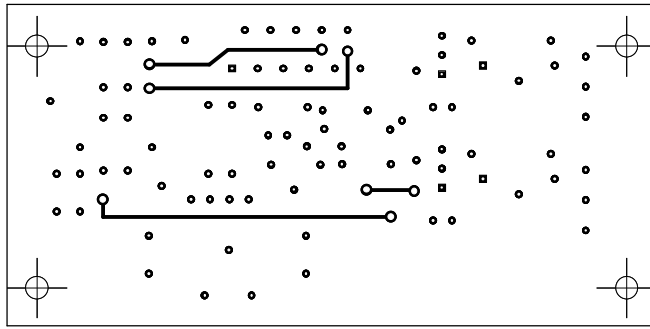
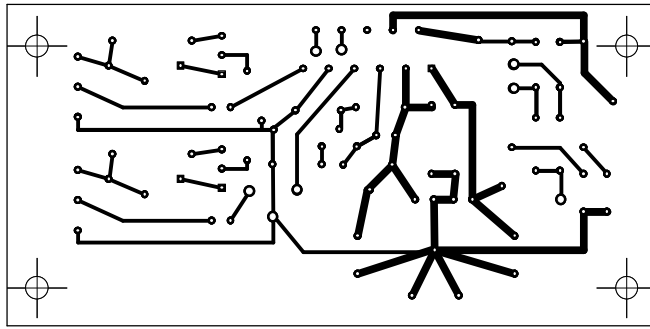


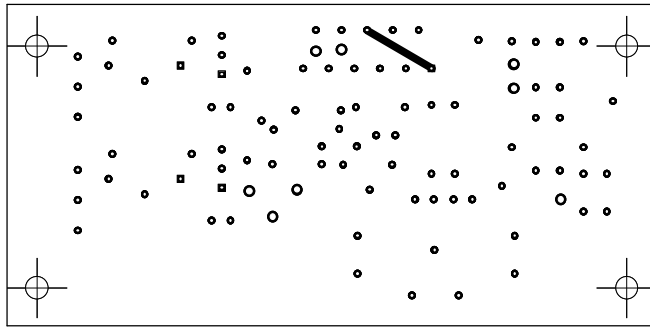
amplificator stereo 2x16W - modul amplificator  
 component side, top layer (black), bottom layer (grey), not mirrored



amplificator stereo 2x16W - modul amplificator  
top layer

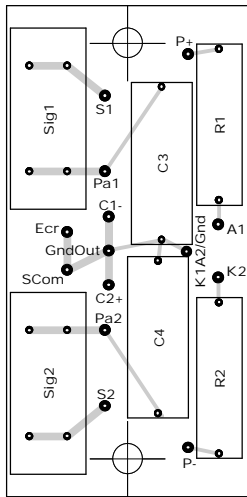


amplificator stereo 2x16W - modul amplificator  
solder side, bottom layer, mirrored

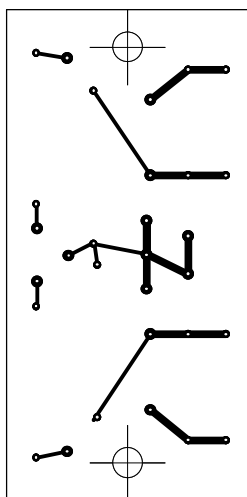


amplificator stereo 2x16W - modul amplificator

solder side, bottom auxiliary layer, mirrored



amplificator stereo 2x16W - modul sigurante fuzibile  
 component side, bottom layer (grey), not mirrored



amplificator stereo 2x16W - modul sigurante fuzibile  
solder side, bottom layer, mirrored